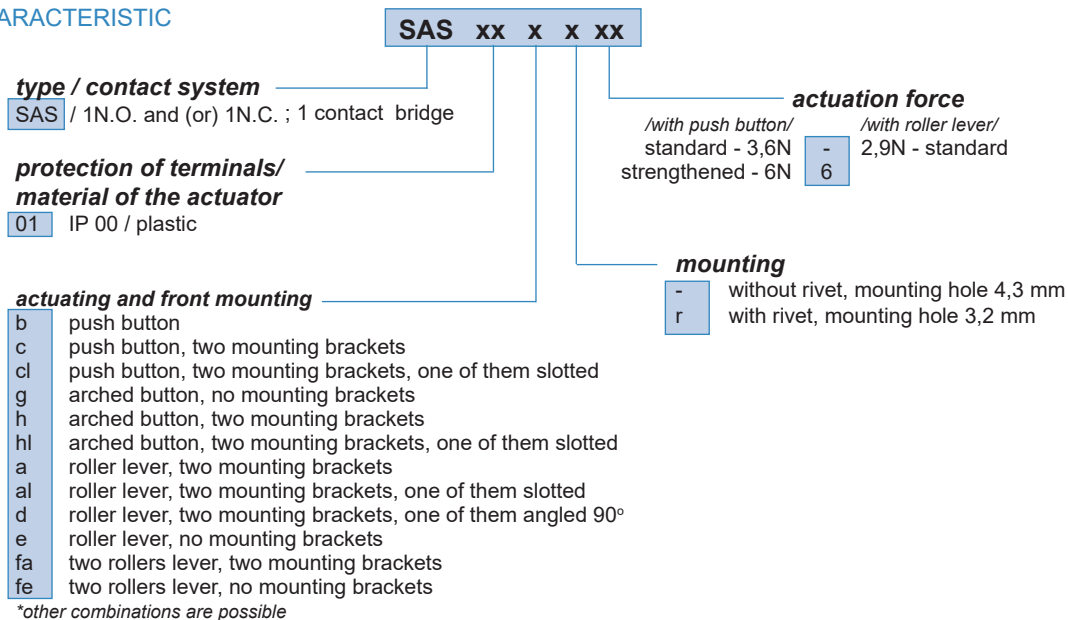


## SNAP ACTION SWITCH TYPE SAS-01

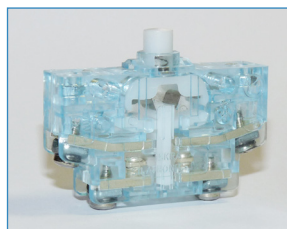
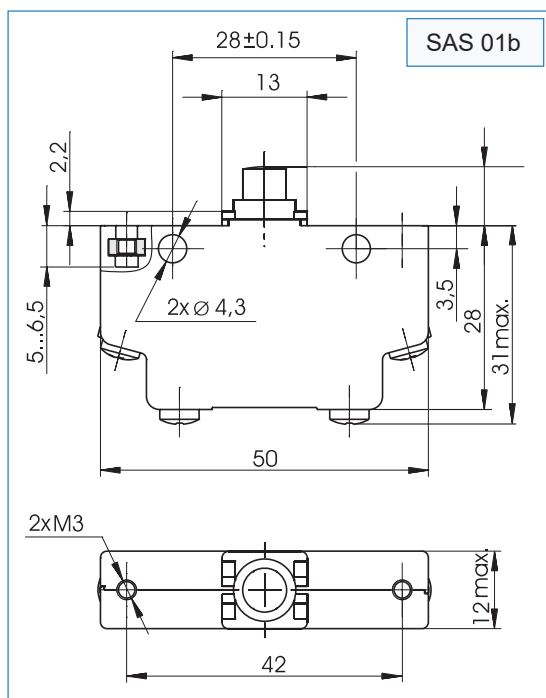
SAS 01 Series snap-action switches have one NO and one NC contacts. The change of the switching position is realized by the mechanism, which ensures rapid switching and gives the possibility for switching of high currents. The electric circuit interrupts by double break. The snap-action switches are in the procession of a mechanism, which in case of short-circuit breaks forced the welded normally closed contact. The contact system is placed in a small design made of transparent light blue plastic material with high electrical and mechanical characteristics. The contact system in various versions is actuated directly or through lever system.

### TYPE CHARACTERISTIC



### OVERALL AND CONNECTING DIMENSIONS

EXAMPLE SAS 01b



## TECHNICAL DATA

|                                                    | Standard | SAS 01<br>/b, c, g, h/                          | SAS 01<br>with roller lever<br>/a, d, e/ | SAS 01<br>with two roller<br>levers /fa, fe/ |
|----------------------------------------------------|----------|-------------------------------------------------|------------------------------------------|----------------------------------------------|
| Contact configuration                              | EN 60947 | 1N.O. and (or) 1N.C. ; 1 contact bridge         |                                          |                                              |
| Conventional thermal current $I_c$                 | EN 60947 | 16 A                                            |                                          |                                              |
| Rated insulation voltage $U_i$                     | EN 60947 | 400 V                                           |                                          |                                              |
| Pollution degree                                   | EN 60947 | 3                                               |                                          |                                              |
| Rated impulse withstand voltage $U_{imp}$          | EN 60947 | 4 kV                                            |                                          |                                              |
| Utilization category                               | EN 60947 | AC - 15, 230 VAC / 1.6A / DC - 13, 110 VDC / 1A |                                          |                                              |
| Contact material                                   | --       | Silver (Ag)                                     |                                          |                                              |
| N.C. Contact force                                 | EN 60947 | 0,70 N min.                                     |                                          |                                              |
| Actuation travel                                   | --       | 2.35 mm                                         | 3.60 mm                                  | 3.50 mm                                      |
| Actuation force (standard)                         | EN 60947 | 3.6 N min.                                      | 2.9 N min.                               |                                              |
| Max. actuating travel                              | --       | 3.2 mm                                          | 5.40 mm                                  | 9.00 mm                                      |
| Actuation speed                                    | EN 60947 | $\geq 1$ mm/s                                   |                                          |                                              |
| Positive opening force                             | EN 60947 | 35 N                                            | 26 N                                     | 26 N                                         |
| Mechanical life, cycles                            | EN 60947 | $10^7$                                          |                                          |                                              |
| Wire connecting type ( single-core or multi-core ) | --       | AWG 18...14 ( 0.75 ... 2.5 mm <sup>2</sup> )    |                                          |                                              |
| Wire connecting type when ferrule is used          | --       | max. AWG 16 (1.5 mm <sup>2</sup> max.)          |                                          |                                              |
| Max.number of wires for one terminal               | --       | 2 pcs.                                          |                                          |                                              |
| Tightening torque of terminal screws               | EN 60947 | 0.9 Nm                                          |                                          |                                              |
| Protection degree                                  | EN 60529 | contact system - IP 40, terminals IP 20         |                                          |                                              |
| Casing material                                    | --       | transparent light blue polycarbonate            |                                          |                                              |
| Sea level                                          | EN 60947 | up to 2 000 m                                   |                                          |                                              |
| Operating conditions                               | --       | normal fire hazard                              |                                          |                                              |
| Ambient temperature                                | EN 60947 | - 40°C ÷ + 85°C                                 |                                          |                                              |
| Weight                                             | --       | 26 g                                            | 37 g                                     | 39 g                                         |

## BREAKING CAPACITY at:

| Value                   | Symbol | Measure | DC      |        |        |        | AC     |         |
|-------------------------|--------|---------|---------|--------|--------|--------|--------|---------|
|                         |        |         | DC - 13 |        |        |        | AC - 1 | AC - 15 |
| Rated operating voltage | $U_e$  | V       | 12      | 24     | 40     | 110    | 230    |         |
| Rated operating current | $I_e$  | A       | 8       | 4      | 2.5    | 1      | 10     | 1,6     |
| Breaking capacity       | cycles | pcs.    | $10^6$  | $10^6$ | $10^6$ | $10^6$ | $10^6$ |         |

## TECHNICAL DATA FOR CONTACT SYSTEM

| Actuator position             | SAS 01 a, d, e    | SAS 01 b, c       | SAS 01 g, h       | SAS 01 fa, fe      |
|-------------------------------|-------------------|-------------------|-------------------|--------------------|
|                               | Dimension "x"     | Dimension "x"     | Dimension "x"     | Dimension "x"      |
| Free position                 | 20.00 mm ± 0.35mm | 8.85 mm ± 0.15 mm | 10.45 mm ± 0.20mm | 26.50 mm ± 0.25 mm |
| Operating position            | 16.40 mm ± 0.35mm | 6.50 mm ± 0.25 mm | 8.20 mm ± 0.35 mm | 23.00 mm ± 0.35 mm |
| Release position              | 18.20 mm ± 0.35mm | 7.70 mm ± 0.25 mm | 9.40 mm ± 0.35 mm | 24.50 mm ± 0.35 mm |
| Total positive opening travel | 14.6              | 5.65              | 7.25 mm           | 17.50 mm           |
| Total travel position         | 14.6 mm ± 0.15mm  | 5.65 mm ± 0.15 mm | 7.25 mm ± 0.15 mm | 17.50 mm ± 0.15 mm |